

AVer



PTC310H

AI Auto Tracking PTZ Camera





TRACK EVERY MOMENT

The PTC310H AI Auto Tracking PTZ Camera makes powerful and reliable Pro AV capability available to everyone. Drawing inspiration from the AVer Professional PTZ Camera family, the PTC310H features in-house AI functions like Presenter Mode and Zone Mode auto tracking, thanks to Human Detection processing. Combine the 12X Optical Zoom lens and 4K resolution with hybrid auto tracking and smooth PTZ functions for broadcasting, streaming, or recording. Your exciting journey of audio and video capturing starts here!



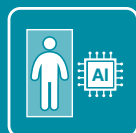
4K Ultra HD Resolution



12X Optical Zoom



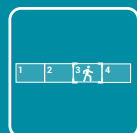
IP/HDMI/USB



Human Detection AI



Presenter Mode



Zone Mode



Intuitive Web UI



Exclusive Ceiling Mount

4K Output Resolution

Equipped with 4K resolution, the PTC310H provides ultra-precise auto tracking. The PTC310H also features a Sony sensor that maintains a truly impressive video performance through every frame of your production.



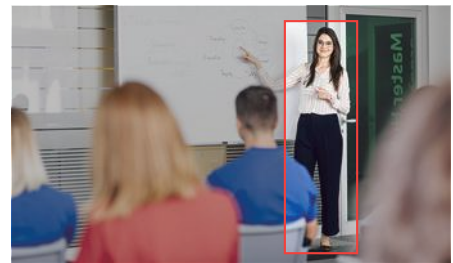
12X Optical Zoom & 2X Sensor Zoom

The zoom power of the PTC310H reaches an incredible 24X (12X optical and 2X sensor zoom). It works even while the camera is panning and tilting, allowing you to highlight content and rapidly change shooting angles. Operate a closer and clearer video feed with the unbeatable PTZ performance of the PTC310H.



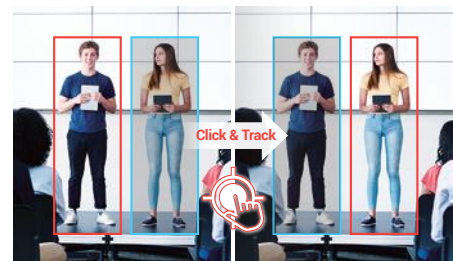
Human Detection AI

Welcome AVer's most advanced AI tool yet—Human Detection. This highly accurate processing function enables the PTC310H to easily detect and capture human forms and moving objects in seconds. Never miss a tracking target again.



Click & Track

Redirect focus in an instant with the PTC310H. Simply click on a target to quickly adjust the shooting angle and initiate precise tracking. This advanced feature is easy for anyone to operate via both remote control and intuitive Web UI.



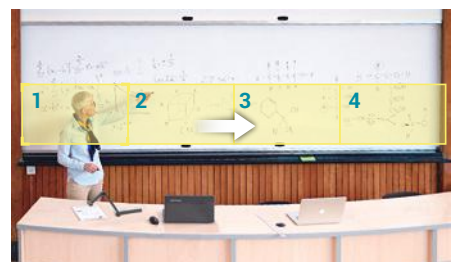
Presenter Mode

Track your target everywhere with Presenter Mode. This feature gives presenters the flexibility to leave the stage and interact with the audience, all while being continuously tracked. The camera stays locked on its target, even if other people or objects get in the way.



Zone Mode

Zone Mode enhances your ability to capture content on multiple displays. Create up to four Content Zones to steadily capture the content on display rather than the presenter's movements.



Product Specifications

Camera		AI Auto Tracking Functions	
Image Sensor	1/2.8" 4K Exmor CMOS	Tracking Modes	Presenter Mode, Zone Mode
Effective Picture Elements	8 Megapixels	Interface	
Output Resolutions	4K/30, 4K/29.97, 4K/25, 1080p/60, 1080p/59.94, 1080p/50, 1080p/30, 1080p/29.97, 1080p/25, 1080i/60, 1080i/50, 720p/60, 720p/59.94, 720p/50	Video Outputs	HDMI, IP, USB
Minimum Illumination	0.4 lux (IRE50, F1.6, 30fps)	Audio Outputs	HDMI, IP, USB
S/N Ratio	≥ 50 dB	Audio Inputs	MIC in, Line in
Gain	Auto, Manual	General	
TV Line	1400 (Center)	Power Requirement	AC 100 - 240V to DC 12V/5A
Shutter Speed	1/1 to 1/32,000 sec	Power Consumption	18W
Exposure Control	Auto, Manual, Priority AE (Shutter, IRIS), BLC, WDR	PoE	PoE+
White Balance	Auto, Manual	Dimensions (W x H x D)	180.0 x 183.5 x 145.0 mm
Optical Zoom	12X	Net Weight	1.7 (±0.1) kg
Digital Zoom	12X	Application	Indoor
Sensor Zoom	2X	Tally Lamp	Yes
Viewing Angles	DFOV : 78° (Wide) to 7° (Tele) HFOV : 70° (Wide) to 6° (Tele) VFOV : 42° (Wide) to 3° (Tele)	Security	Kensington Slot
Focal Length	f = 3.9 mm (Wide) to 46.8 mm (Tele)	Remote Control	Infrared
Aperture (Iris)	F = 1.6 (Wide) to 2.8 (Tele)	Operating Conditions	Temperature : 0 °C to +40 °C Humidity : 20% to 80%
Minimum Working Distance	0.3 m (Wide), 1.5 m (Tele)	Storage Conditions	Temperature : -20 °C to +60 °C Humidity : 20% to 95%
Pan / Tilt Angles	Pan : ±170°, Tilt : +90° / -30°	IP Streaming	
Pan / Tilt Speed (Manual)	Pan : 0.1° to 100° / sec, Tilt : 0.1° to 100° / sec	Resolution	4K 30fps
Preset Speed	Pan : 200° / sec, Tilt : 200° / sec	Network Video Compress Formats	H.264, H.265, MJPEG
Preset Positions	10 (IR), 256 (RS-232 / RS-422 / IP)	Maximum Frame Rate	4K 30fps
Camera Control - Interfaces	RS-232 (DIN8), RS-422 (RJ45), IP	Bit-Rate Control Modes	VBR, CBR (selectable)
Camera Control - Protocols	VISCA (RS-232 / RS-422 / IP), PELCO-D & PELCO-P (RS-232 / RS-422), CGI (IP)	Range of Bit-Rate Setting	512 Kbps to 32 Mbps
Image Processing	Noise Reduction (2D / 3D), Flip, Mirror	Network Interfaces	10 / 100 / 1000 Base-T
Power Frequencies	50 Hz, 60 Hz	Multi-Stream Capability	2 (RTSP / Web Page), 1080p 60fps (max.)
Audio		Network Protocols	IPv6, IPv4, TCP, UDP, ARP, ICMP, IGMP, HTTP, DHCP, RTP / RTCP, RTSP, RTMP, VISCA over IP
Channels	2ch Stereo	USB	
Codecs	AAC-LC (48 / 44.1 / 32 / 24K), G.711, PCM (8K)	Connector	USB 3.0
Sample Rates	48 / 44.1 / 32 / 24 / 16 / 8 KHz	Video Format	MJPEG
Web UI		Maximum Video Resolution	2160p
Live Video Preview	Yes	USB Video Class (UVC)	UVC 1.1
Camera PTZ Control	Pan, Tilt, Zoom, Focus, Preset Control	USB Audio Class (UAC)	UAC 1.0
Camera/Image Adjustment	Exposure, White Balance, Picture	Software Tools	
Network Configuration	DHCP, IP Address, Gateway, Subnet Mask, DNS	IP Search and Configuration Tool	Support Windows® 7 or later
Warranty		PTZ Management	Support Windows® 7 or later
Camera	3 Years	PTZ Control Panel	Support iPadOS® v11 or later
Accessories	1 Year	CaptureShare	Support Windows® 7 or later
Package Contents			
Camera, Remote Control, RS-232 In/Out Cable, Din 8 To D-Sub 9 Cable, Power Adapter, Power Cord, Cable Ties (x 5), Screws (x 10), Cable Fixing Plates (x 2), Ceiling Mount Brackets (x 2), Quick Start Guide			
Optional Accessories			
AVer CL01 PTZ Camera Controller, L-Type Wall Mount			

* Specifications may vary depending on location and are subject to change without notice.

Product Appearance



©2021 AVer Information Inc. All rights reserved.
All brand names and logos are trademarks of their respective companies.

Distributor/Dealer