



## Compact 5-Port Gigabit Switch

Powered by 802.3af/at PoE or USB Type C

Compact Desktop Footprint

Energy-Efficient Design

Model: USW-Flex-Mini



## Overview

Expand your network with the UniFi<sup>®</sup> Switch Flex Mini, part of the Ubiquiti<sup>®</sup> UniFi Enterprise System.

### Compact Desktop Design

The cost-effective UniFi Switch Flex Mini can be discreetly integrated into any environment.

### Copper Connectivity

Five RJ45 ports offer 10/100/1000 links. One port also supports 802.3af/at PoE input.

### Efficient Use of Energy

The UniFi Switch Flex Mini uses only a maximum of 2.5W.

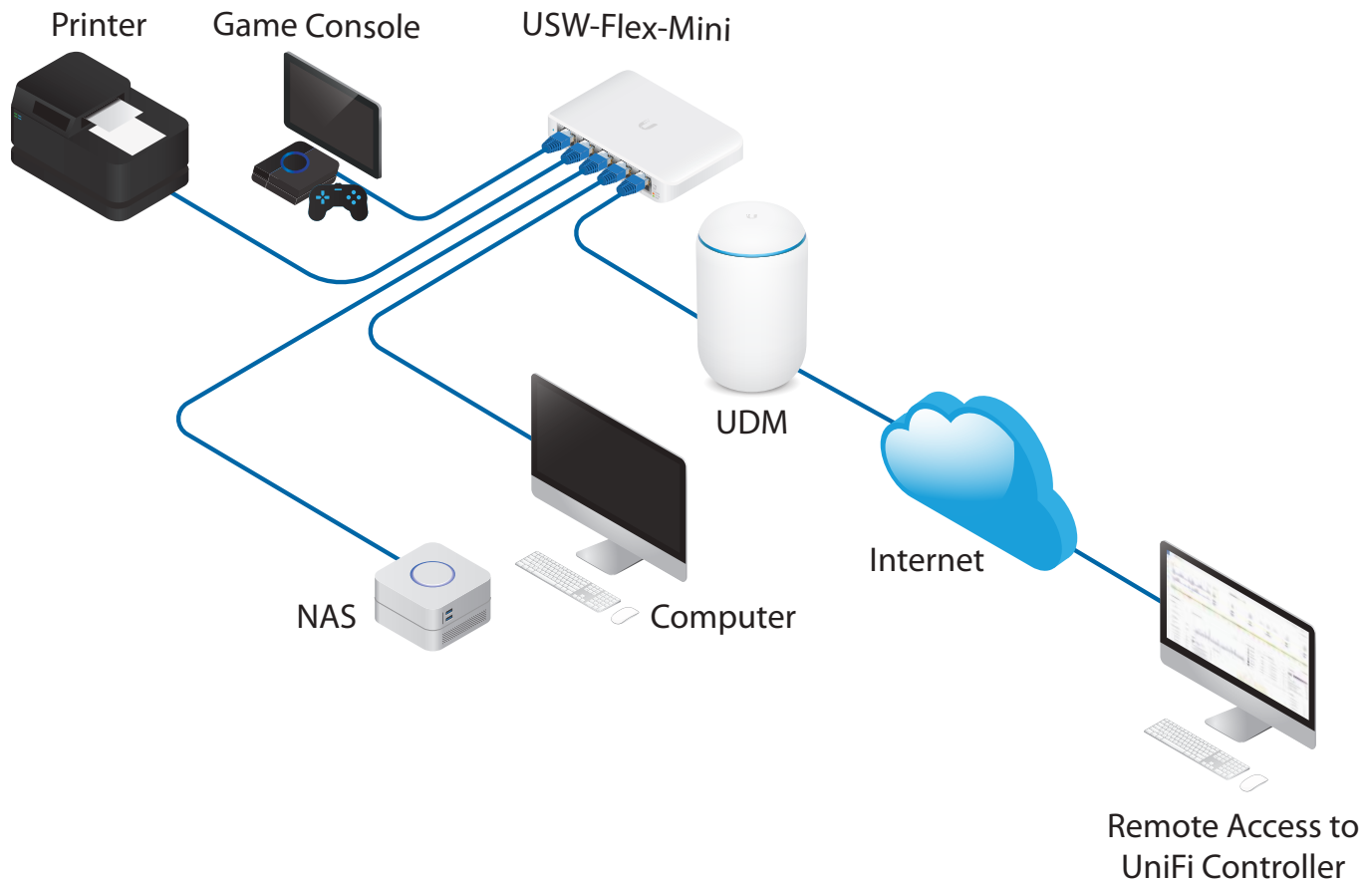
For your convenience, it can be powered by 802.3af/at PoE or a 5V, 1A USB-C power adapter\*.

### Switching Performance

The UniFi Switch Flex Mini offers the forwarding capacity to simultaneously process traffic on all ports at line rate without any packet loss.

\* Included only with the single-pack of the USW-Flex-Mini.

## Deployment Example



*The UniFi Switch Flex Mini connects a variety of devices, including a printer, game console, NAS, and computer.*



## Scalable UniFi Network Controller

### Management Capabilities

The UniFi Network™ Controller can provision UniFi devices, map out networks, and quickly manage system traffic. Important network details are logically organized for a simplified, yet powerful, interface.

### Network Overview

From a single pane of glass, view network topology and configuration, real-time statistics, and debugging metrics. Monitor your network's vitals and make on-the-fly adjustments as needed.

### Multi-Site Management

A single controller running in the cloud can manage multiple sites: multiple, distributed deployments and multi-tenancy for managed service providers. Each site is logically separated and has its own configuration, maps, statistics, guest portal, and administrator accounts.

### Deep Packet Inspection

Ubiquiti's proprietary Deep Packet Inspection (DPI) engine includes the latest application identification signatures to track which applications (and IP addresses) are using the most bandwidth.

### Detailed Analytics

The UniFi Network Controller provides configurable reporting and analytics to manage large user populations and expedite troubleshooting. Advanced search and sorting capabilities make network management more efficient.

### Software Features

The UniFi Network Controller software offers the following features for the UniFi Switch Flex Mini:

- Centralized configuration management (including configuration cloning)
- Auto-MDIX automatically adjusts as needed for straight through or crossover cable

### Switch Configuration

You can access the UniFi Switch Flex Mini through the UniFi Controller to configure a variety of features:

- Operation mode (switching or mirroring) per port
- Network/VLAN configuration\*
- Jumbo frame and flow control services
- Network settings
- Storm control setting per port

### Switch Port Status

You can also view status information for each port:

- Connection speed and duplex mode
- TX/RX data rates
- Network/VLAN setting\*

\* USW-Flex-Mini uses port-based VLANs only and does not support SSH, STP (forwarding only), 802.1X, DNS suffix, or experience in the controller.



| USW-Flex-Mini                                    |  |
|--|--|
| Dimensions                                       | 107.16 x 70.15 x 21.17 mm<br>(4.22 x 2.76 x 0.83")                                   |
| Weight   | 150 g (5.29 oz)  |
| Interfaces<br>Networking<br>PoE In<br>Management | (5) 10/100/1000 RJ45 Ports<br>802.3af/at PoE (Pins 1, 2+; 3, 6-)<br>Ethernet In-Band |
| Total Non-Blocking<br>Throughput                 | 5 Gbps   |
| Switching Capacity                               | 10 Gbps  |
| Forwarding Rate                                  | 7.44 Mpps  |
| Power Method                                     | USB Type C, 5V<br>802.3af/at PoE<br>(44 - 57VDC, 0.05 - 0.04A)                       |
| Power Supply                                     | 5V, 1A Power Adapter*  |
| Voltage Range<br>USB Type C<br>802.3af/at PoE    | 4.7 - 5.3V<br>44 - 57VDC   |
| Max Power Consumption                            | 2.5W   |
| LEDs<br>System<br>RJ45 Data Ports                | Status<br>Speed/Link/Activity  |
| ESD/EMP Protection                               | Air: ± 16 kV, Contact: ± 12 kV   |
| Shock and Vibration                              | ETSI300-019-1.4 Standard   |
| Operating Temperature                            | -5 to 45° C (23 to 113° F)   |
| Operating Humidity                               | 10 - 90% Noncondensing   |
| Certifications                                   | CE, FCC, IC  |

\* Included only with the single-pack of the USW-Flex-Mini

