

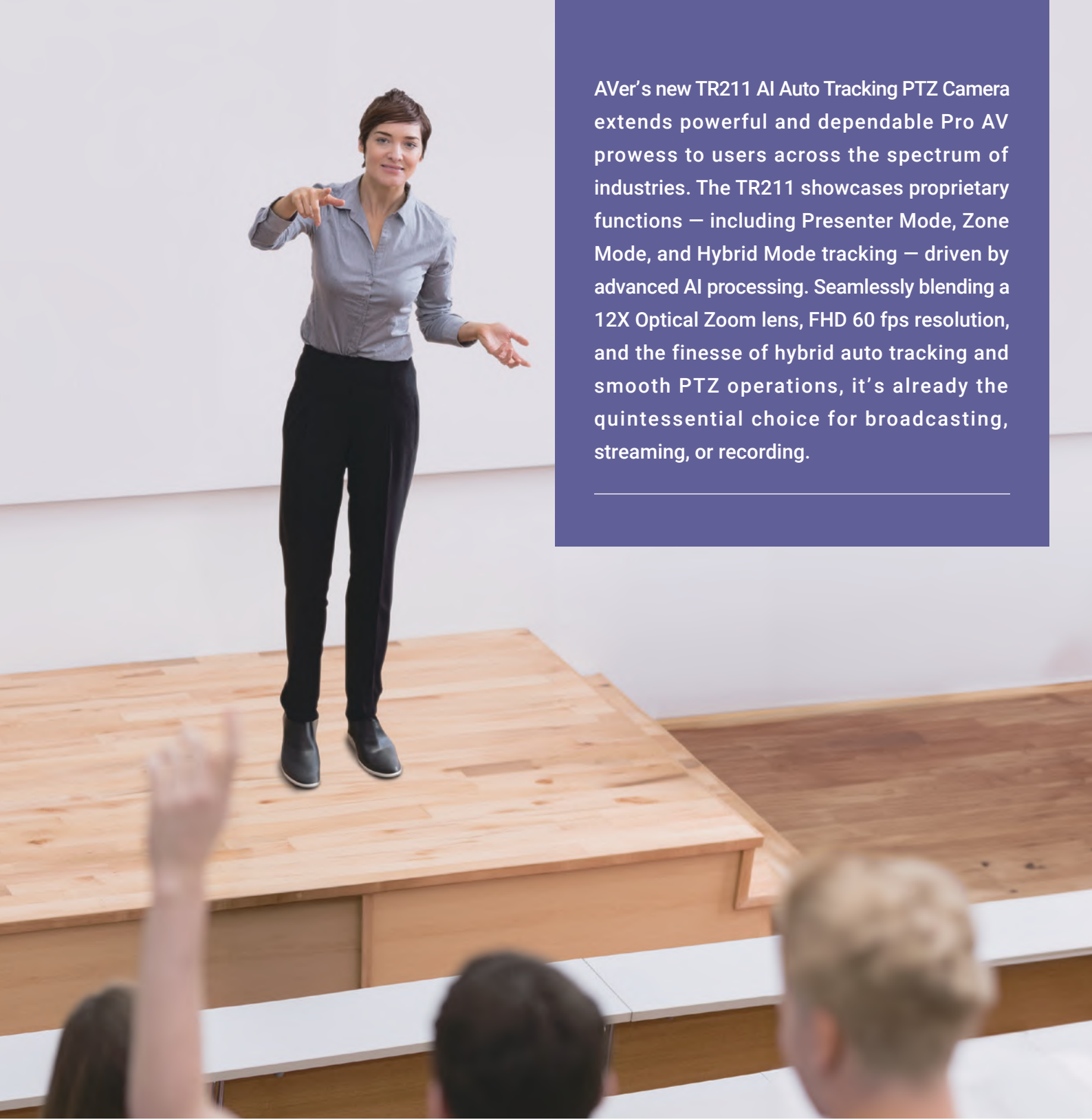


# SUPERIOR PRO AV TRACKING

## AVer **TR211**

AI Auto Tracking PTZ Camera





AVer's new TR211 AI Auto Tracking PTZ Camera extends powerful and dependable Pro AV prowess to users across the spectrum of industries. The TR211 showcases proprietary functions – including Presenter Mode, Zone Mode, and Hybrid Mode tracking – driven by advanced AI processing. Seamlessly blending a 12X Optical Zoom lens, FHD 60 fps resolution, and the finesse of hybrid auto tracking and smooth PTZ operations, it's already the quintessential choice for broadcasting, streaming, or recording.



Full HD 1080p Resolution



12X Optical Zoom



IP/HDMI/USB/3G-SDI



Intuitive Web UI



5-Year Warranty



Human Detection AI



Presenter Mode



Zone Mode



Hybrid Mode

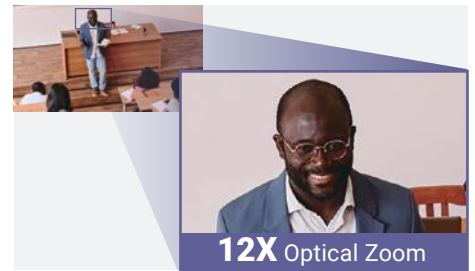


Voice Tracking\*

\* Voice Tracking requires PTZ Link.

## 12X Optical Zoom Magnifies Details

Experience the exceptional power of the TR211 camera's astounding 12X optical zoom. This feature seamlessly operates even while the camera is panning and tilting, granting you the ability to accentuate content and quickly shift between shooting perspectives. Embrace the advantage of dynamic, crystal-clear video feeds through the TR211's unparalleled PTZ performance.



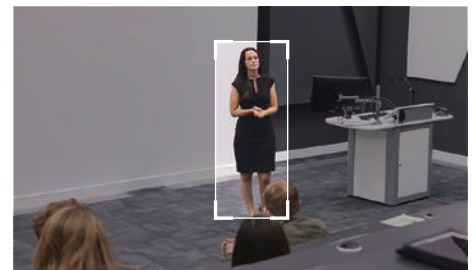
## HDMI/USB/IP. 60 FPS.

Leverage the TR211's Full HD 1080p 60 fps streaming potential through HDMI, USB, and IP outputs. Free from intricate configurations and cable entanglements, you can effortlessly use multiple devices simultaneously to produce fluid video streams.



## AI Auto Tracking Makes Streaming Smart & Effortless

Powered by highly precise processing, AVer's cutting-edge AI Auto Tracking algorithms easily identify and capture human figures and moving objects. You'll never lose track of your target again with the TR211's unmatched tracking precision.



## Presenter Mode

Get unparalleled tracking performance with Presenter Mode. This dynamic feature empowers presenters to venture beyond the stage to engage with their audience while the camera maintains seamless tracking.



## Zone Mode

Zone Mode elevates your ability to capture content across multiple displays. Generate up to four dedicated Content Zones to consistently capture displayed information or items, prioritizing important presentation materials over the presenter's movements.



## Hybrid Mode

Free your performers by enabling unrestricted movement with Hybrid Mode. Use preset areas for zone tracking, letting the camera seamlessly switch to a full view of each pre-defined location as performers move through the areas. If they move beyond these zones, the camera seamlessly adapts, switching to presenter mode to effortlessly and precisely track their movements.



## Product Specifications

Camera		General		
Image Sensor	1/2.8" 1080p Exmor CMOS	Power Requirement	AC 100 - 240V to DC 12V/5A	
Effective Picture Elements	2 Megapixels	Power Consumption	18W	
Output Resolutions	1080p/60, 1080p/59.94, 1080p/50, 1080p/30, 1080p/29.97, 1080p/25, 720p/60, 720p/59.94, 720p/50, 720p/30, 720p/29.97, 720p/25	PoE	PoE+	
		Dimensions (W x H x D)	180.0 x 192.0 x 145.0 mm	
Minimum Illumination	0.46 lux (IRE50, F1.6, 30fps)	Net Weight	2.0 (±0.1) kg	
S/N Ratio	≥ 50 dB	Application	Indoor	
Gain	Auto, Manual	Tally Lamp	Yes	
TV Line	1000 (Center)	Security	Kensington Slot	
Shutter Speed	1/1 to 1/32,000 sec	Remote Control	Infrared	
Exposure Control	Auto, Manual, Priority AE (Shutter, IRIS), BLC, WDR	Operating Conditions	Temperature : 0 °C to +40 °C ; Humidity : 20% to 80%	
White Balance	Auto, Manual	Storage Conditions	Temperature : -20 °C to +60 °C ; Humidity: 20% to 95%	
Optical Zoom	12X	IP Streaming		
Digital Zoom	1X	Resolution	1080p 60fps	
Viewing Angles	DFOV : 80.6° (Wide) to 7.7° (Tele) HFOV : 72.8° (Wide) to 6.7° (Tele) VFOV : 44.1° (Wide) to 3.8° (Tele)	Network Video Compress Formats	H.264, H.265, MJPEG	
		Network Audio Compress Formats	AAC-LC (48K), PCM (8K)	
		Maximum Frame Rate	1080p 60fps	
		Bit-Rate Control Modes	VBR, CBR (selectable)	
Focal Length	f = 3.9 mm (Wide) to 46.8 mm (Tele)	Range of Bit-Rate Setting	512 Kbps to 32 Mbps	
Aperture (Iris)	F = 1.6 (Wide) to 2.8 (Tele)	Network Interface	10 / 100 / 1000 Base-T	
Minimum Working Distance	0.3 m (Wide), 1.5 m (Tele)	Multi-Stream Capability	4 1080p 60fps: RTSP, HDMI & USB 1080p 60fps: 3G-SDI	
Pan / Tilt Angles	Pan : ±170°, Tilt : +90° / -30°		Network Protocols	IPv4, TCP, UDP, ARP, ICMP, IGMP, HTTP, HTTPS, DHCP, RTP / RTCP, RTSP, RTMP, SRT, HLS, NDI, LLDP, VISCA over IP
Pan / Tilt Speed (Manual)	Pan : 0.1° to 100° / sec, Tilt : 0.1° to 100° / sec			NDI® HX3
Preset Speed	Pan : 200° / sec, Tilt : 200° / sec	USB		
Preset Positions	10 (IR), 256 (RS-232 / RS-422 / IP)	Connector	USB 3.1	
Camera Control - Interface	RS-232 (DIN8), RS-422 (RJ45), IP, USB	Video Format	MJPEG, YUY2	
Camera Control - Protocols	VISCA (RS-232 / RS-422 / IP), PELCO-D & PELCO-P (RS-232 / RS-422), CGI (IP), USB, ONVIF	Audio Format	PCM	
Image Processing	Noise Reduction (2D / 3D), Flip, Mirror, WDR, BLC	Maximum Video Resolution	1080p	
Power Frequencies	50 Hz, 60 Hz	USB Video Class (UVC)	UVC 1.1	
AI Auto Tracking Functions		USB Audio Class (UAC)	UAC 1.0	
Tracking Modes	Presenter Mode, Zone Mode, Hybrid Mode	Web UI		
Privacy Protection Mechanisms		Live Video Preview	Yes	
Protection Mode	Sleep Mode	Camera PTZ Control	Pan, Tilt, Zoom, Focus, Preset Control	
AI Control Functions		Camera/Image Adjustment	Exposure, White Balance, Picture	
Gesture Control	Yes	Network Configuration	DHCP, IP Address, Gateway, Subnet Mask, DNS	
Audio		Software Tools		
Channel	2ch Stereo	IP Search and Configuration Tool	Support Windows® 7 or later	
Codec	AAC-LC (48K), PCM (8K)	PTZ Management	Support Windows® 7 or later	
Sample Rates	48 / 44.1 / 32 / 24 / 16 / 8 KHz	PTZ Control Panel	Supports iOS & iPadOS® 9 or later	
Interface		PTZ Link	Supports Windows® 7 or later, macOS® 10.14 or later	
Video Outputs	3G-SDI, HDMI, IP, USB	OBS Plugin for PTZ Cameras	Supports Windows® 8 or later, macOS® High Sierra v10.13 or later	
Audio Outputs	3G-SDI, HDMI, IP, USB	CaptureShare	Supports Windows® 7 or later, macOS® 10.14 or later	
Audio Inputs	Mic in, Line in	Warranty		
Camera		Camera	5 Years	
Accessories		Accessories	1 Year	
Package Contents		Camera, Remote Control, RS-232 In/Out Cable, Din 8 To D-Sub 9 Cable, Power Adapter, Power Cord, Cable Ties (x4), M2 x 4 mm Screws (x3), M3 x 6 mm Screws (x3), 1/4"-20L 6.5mm Screws (x2), Cable Fixing Plate, Ceiling Mount Brackets (x2), Drilling Paper, Quick Start Guide		
Optional Accessories		AVer CL01 PTZ Camera Controller, L-Type Wall Mount		

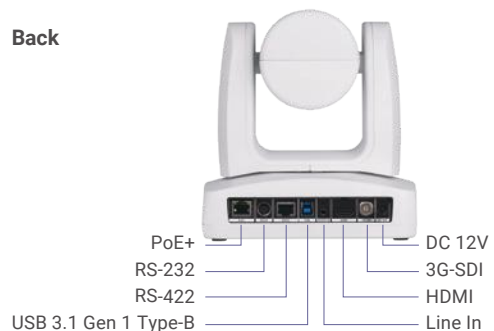
\* Specifications may vary depending on location and are subject to change without notice.

## Product Appearance

Front



Back



©2023 AVer Information Inc. All rights reserved.  
All brand names and logos are trademarks of their respective companies.

www.aver.com



Learn More

Distributor/Dealer

202312